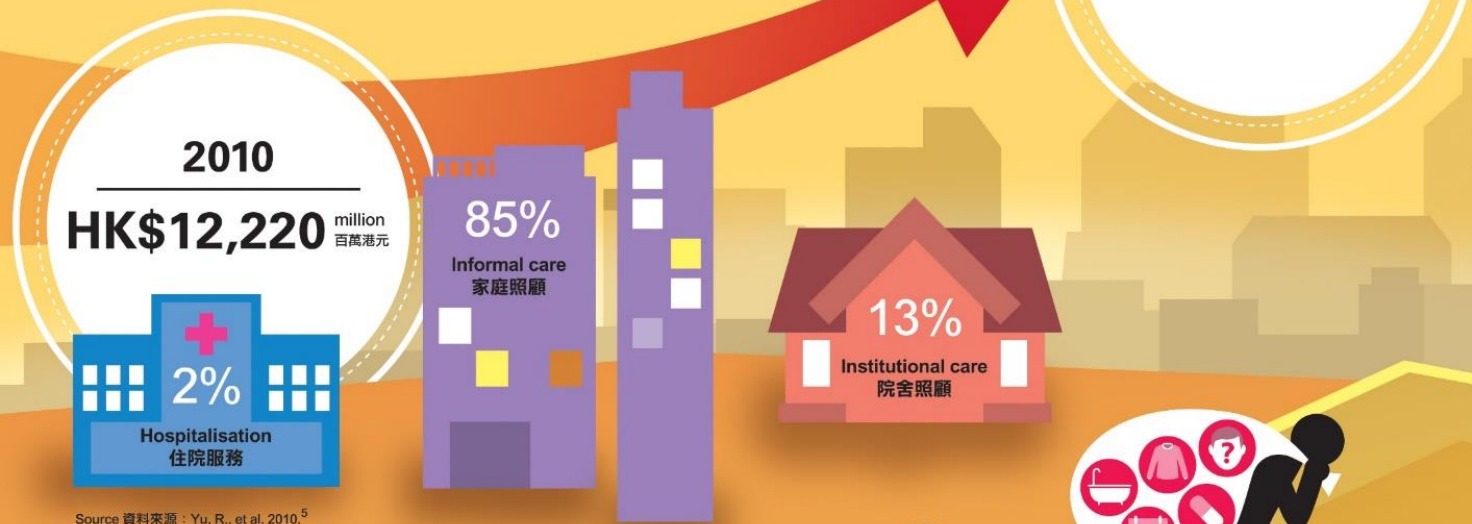


Tools to Inform Policy: Chinese Communities' Action in Response to Dementia

Gloria Wong
 Department of Social Work and Social Administration,
 The University of Hong Kong

SOCIETAL COST OF DEMENTIA 社會成本

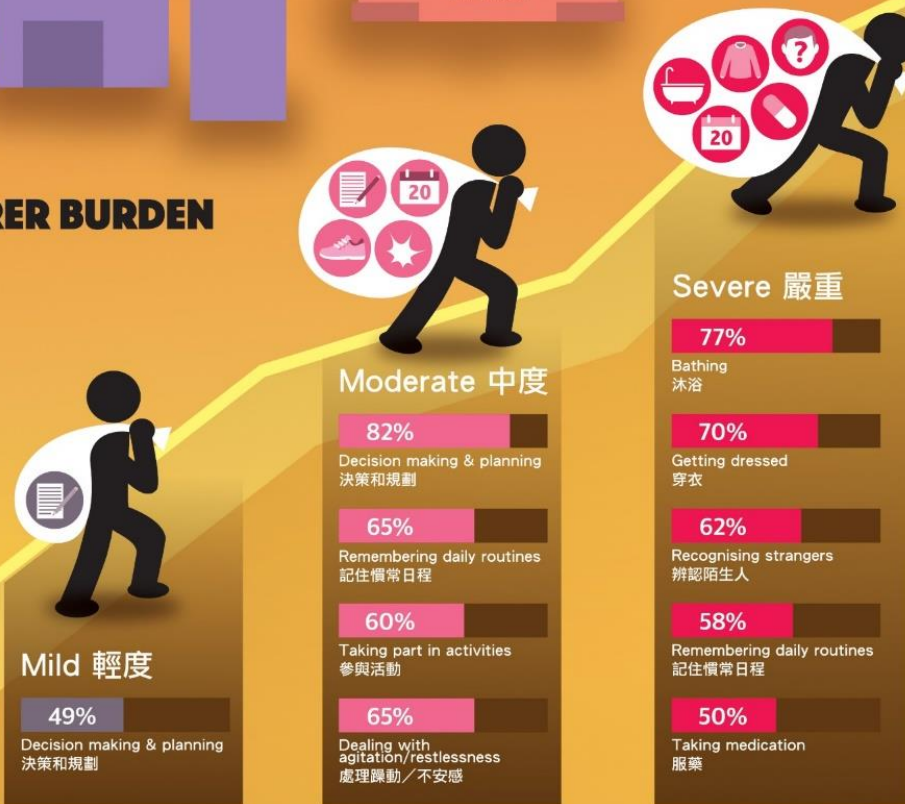


Source 資料來源: Yu, R., et al, 2010.⁵

CARE NEEDS & CARER BURDEN 照顧需要與照顧者負擔

More diverse needs in support for activities of daily living with increasing level of severity.⁷ The typical carer has significant burden.⁸

隨著病情惡化，患者需要越來越多元化的支援去維持日常生活。一般家庭照顧者都感受到顯著的照顧負擔。



Source 資料來源: Chung JCC, 2006.⁷

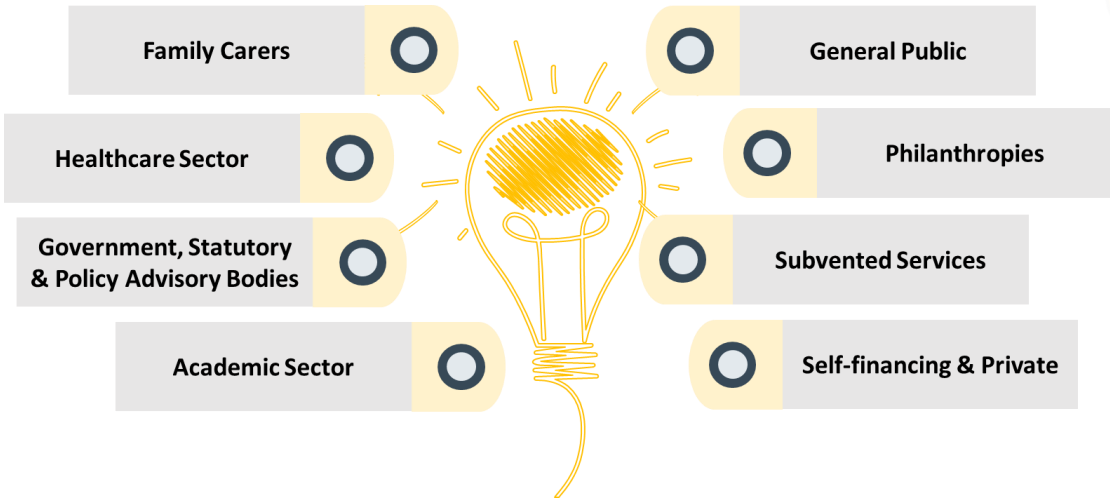
Our Objective

- **Build capacity** in planning & implementing equitable & sustainable strategies in dementia care
- Provide **accessible tools**, data, & local guidelines co-developed with stakeholders
- Support the **generation of policy solutions** for Hong Kong & other Chinese communities

Delphi Study

Shi, C., et al. (2022). *Int J Nurs Stud.*
 doi.: 10.1016/j.ijnurstu.2022.104300

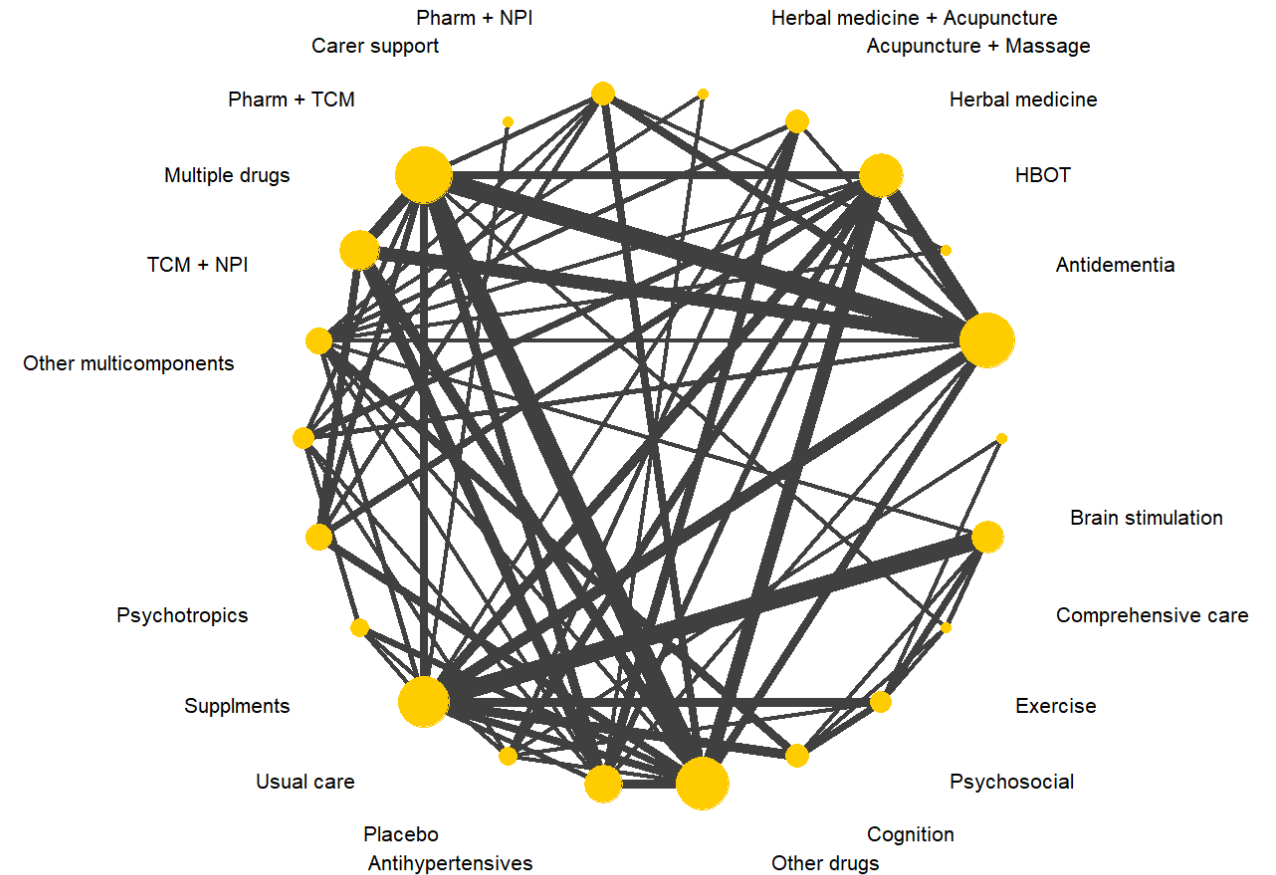
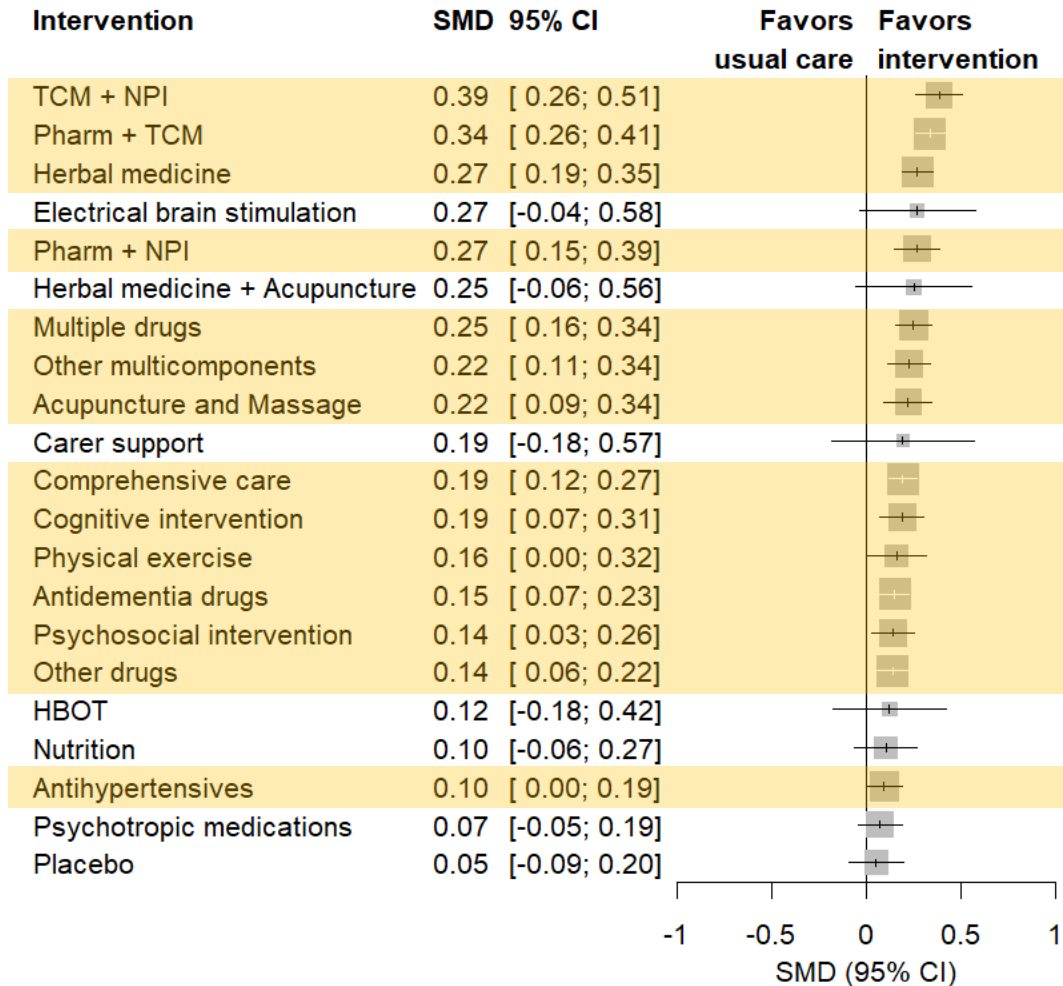
What should dementia care look like in Hong Kong in 10 years?



Protocol

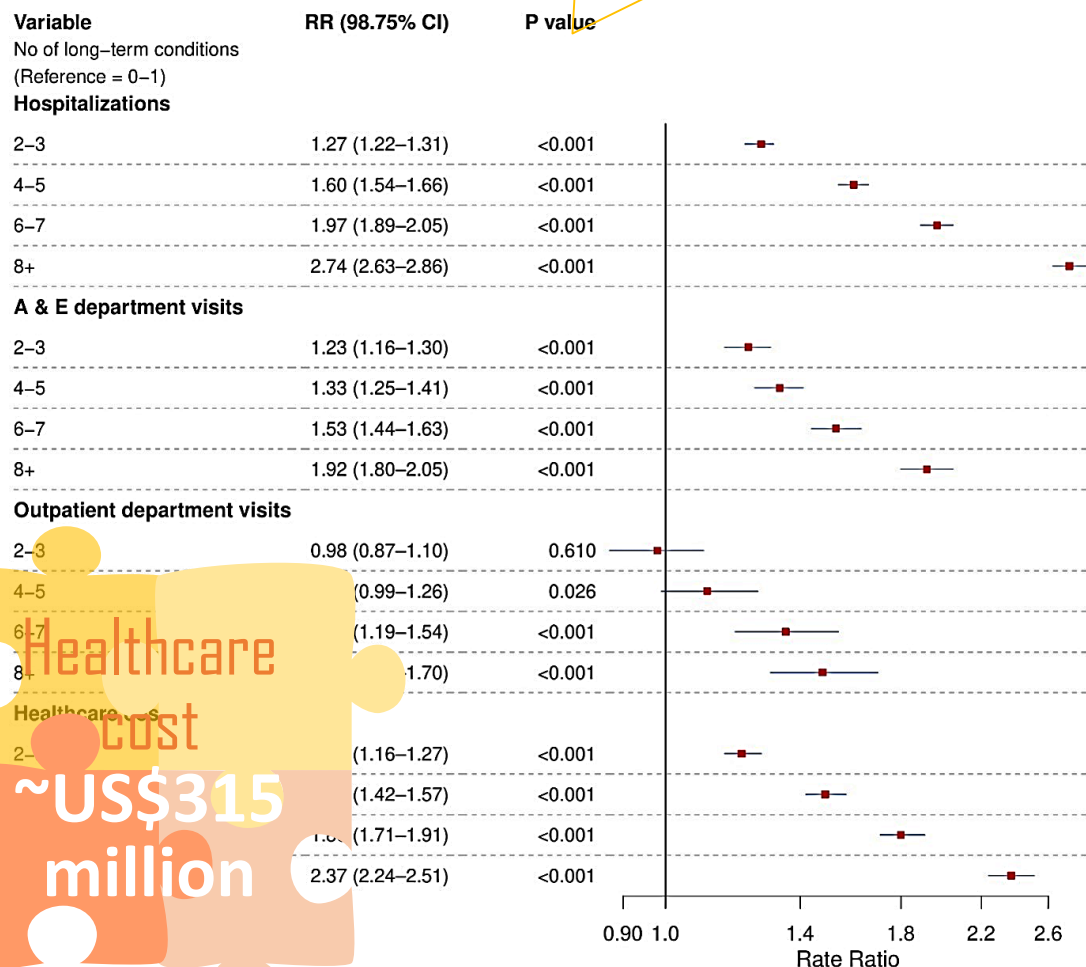
Shi, et al. *BMJ Open*, 17, 11(8):e047560. doi.:
10.1136/bmjopen-2020-047560

What intervention / support works in Chinese?



What is the current situation of dementia care in Hong Kong?

What is the cost of dementia in Hong Kong?



Thank You

Principal Investigators

The University of Hong Kong

Dr Gloria HY Wong
 Professor Terry YS Lum
 Professor Doris SF Yu
 Dr Hao Luo

Chinese University of Hong Kong

Dr Jennifer Tang

London School of Economics and Political Science

Professor Martin Knapp
 Ms Adelina Comas-Herrera

Hong Kong Alzheimer's Disease Association

Dr David LK Dai

Peking University

Professor Yueqin Huang

Project Researchers

Dr Jacky Choy
 Dr Cheng Shi
 Dr Dara Leung
 Dr Xinxin Cai
 Dr Vicky Wang
 Ms Kayla Wong
 Ms Emily Leung
 Ms Maggie Ma
 Ms Maggie Yeung
 Ms Pengcheng Wang
 Mr Yingyang Zhang

@tip_card www.tip-card.hku.hk



Healthcare
 Cost
 ~US\$315
 million