

# FAMILY CARER SUPPORT AND PUBLIC EDUCATION

## 照顧者支援和公眾教育

### Carer Allowance 護老者津貼

Pilot Scheme on Living Allowance for Carers of Elderly Persons from Low-income Families (2014-2020)  
為低收入家庭護老者提供生活津貼試驗計劃 (2014-2020)

### Public Education 公眾教育

'Dementia Friendly Community Campaign' - a 3-year campaign of the Social Welfare Department and regular health talks conducted by Department of Health and NGOs  
由社會福利署推行為期三年的公眾教育活動：「全城『認知無障礙』大行動」和由衛生署和非政府機構定期舉辦健康講座

### Respite services 暫託服務

172 places in day care units, 56 places in subvented residential care homes and contract homes  
172個日間暫託服務名額，56個由津助安老院及合約院舍提供的暫託宿位

### Carer training and support 照顧者培訓和支援

Provided by all subvented elderly service units and through DCSS  
由各個津助長者服務單位提供和透過智友醫社同行計劃推行

## EXISTING POLICIES 現行政策

**No** existing dementia-specific policy in Hong Kong

香港現時並沒有針對認知障礙症而制訂的相關政策

### Elderly Services Programme Plan

安老服務計劃方案

"Services for elderly persons with dementia should be strengthened. The issue of dementia should be considered as an integral part in the whole spectrum of elderly services and a multidisciplinary approach should be adopted."<sup>12</sup>

「應加強認知障礙症長者的服務。應在各項安老服務中顧及與認知障礙症相關的事宜，並應採取跨專業方式提供服務。」

### Mental Health Review Report<sup>9</sup>

精神健康檢討報告

- |  |   |
|--|---|
| 1 Public education on awareness<br>加強教育公眾對認知障礙症的了解和認識                | 6 Increasing supply of healthcare manpower and strengthening training<br>增加醫療人力供應並加強其培訓                   |
| 2 Territory-wide prevalence studies<br>進行全港認知障礙症患病率研究                | 7 Strengthening social care infrastructure to allow persons remain in the community<br>加強社會護理基建，讓患者盡量留在社區 |
| 3 A common reference to support primary care<br>編制通用的參考資料為基層醫療工作提供支援 | 8 Enhancing medical-social collaboration to provide person-centered care<br>加強醫社合作以提供以人為本的照顧              |
| 4 Enhancing the role of primary care<br>加強基層醫療的角色                    | 9 Promoting end-of-life and palliative care<br>推廣在社區接受生命晚期照顧和舒緩治療   |
| 5 Strengthening capacity of specialist services<br>加強專科服務能力          | 10 Enhancing support for carers<br>加強對照顧者的支援  |

#### References 參考資料

- Census and Statistics Department of HKSAR. Hong Kong Population Projections 2017-2066. Hong Kong: Census and Statistics Department, Hong Kong Special Administrative Region; 2017.
- Census and Statistics Department of HKSAR. Hong Kong Monthly Digest of Statistics. Hong Kong: Census and Statistics Department, Hong Kong Special Administrative Region; 2019.
- Yu R, Chau PH, McGhee SM, et al. Trends in prevalence and mortality of dementia in elderly Hong Kong population: projections, disease burden, and implications for long-term care. *Int J Alzheimers Dis* 2012; 2012: 406852.
- Hospital Authority. Dementia. 2017. <https://www21.ha.org.hk/smartpatient/SPW/en-US/Disease-Information/Chronic-Diseases-Zone/Details/?guid=0ff3b12b-b3c0-4fa9-9bac-6bcf9dc501ba2019>.
- Yu R, Chau P, McGhee S, et al. Dementia trends: Impact of the ageing population and societal implications for Hong Kong. *The Hong Kong Jockey Club*; 2010.
- Lum T, Wong G, Tang J, Lau M. Cost of Community Care for Dementia and Cognitive Impairment in Hong Kong Chinese: Social and Informal Care Time Analysis. *International Conference of Alzheimer's Disease International*; 2016: Alzheimer's Disease International; 2016.
- Chung JCC. Care needs assessment of older Chinese individuals with dementia of Hong Kong. *Aging & Mental Health* 2006; 10(6): 631-7.
- Tang JY, Ho AH, Luo H, et al. Validating a Cantonese short version of the Zarit Burden Interview (CZBI-Short) for dementia caregivers. *Aging Ment Health* 2016; 20(9): 996-1001.
- Food and Health Bureau of Hong Kong SAR. *Mental Health Review Report*. 2017.
- The Medical Council of Hong Kong. *Annual Report 2017*. 2017.
- Department of Health. *Health Facts of Hong Kong 2019 Edition*. 2019. [https://dh.gov.hk/english/statistics/statistics\\_hs/files/Health\\_Statistics\\_pamphlet\\_E.pdf](https://dh.gov.hk/english/statistics/statistics_hs/files/Health_Statistics_pamphlet_E.pdf).
- Working Group on Elderly Services Programme Plan, Elderly Commission of Government of Hong Kong SAR. *Elderly Services Programme Plan*. 2017.

Disclaimer: The information in the rapid situation analysis is last updated on August 5, 2019.  
免責聲明：快速情況分析的資料最後更新於2019年8月5日。

## DEMENTIA IN HONG KONG 香港的認知障礙症概況

### ● Rapid Situation Analysis 快速情況分析 ●

## AGEING POPULATION 人口老化

Hong Kong is one of the most rapidly ageing societies in the world.

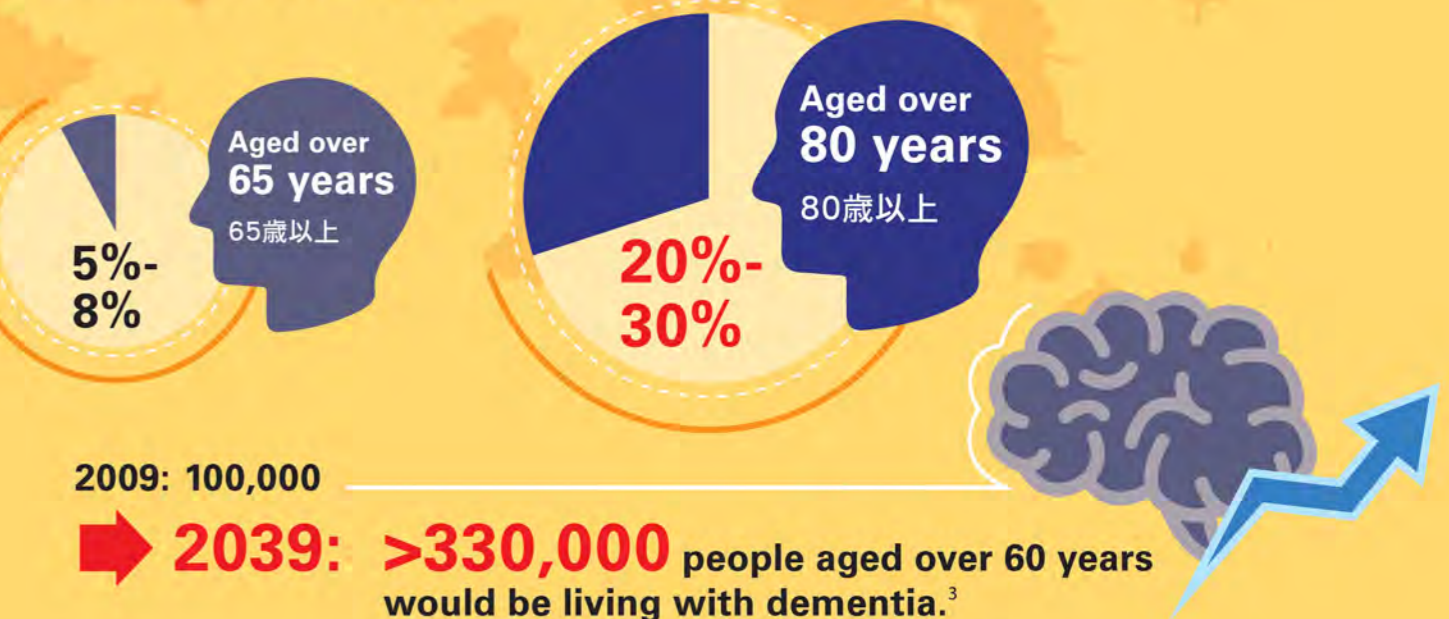
香港是世界上人口老化速度最快的城市之一。



2018 - 17.3%  
2036 - 31.1%  
2066 - 36.6%

Percentage of citizens aged 65 years or above<sup>1,2</sup>  
65歲及以上的人口比例：

## DEMENTIA PREVALENCE 認知障礙症的患病率



## DEMENTIA RESEARCH IN HONG KONG

### 認知障礙症的相關本地研究

Up to June 2019, there are **285** dementia-related studies covering 8 broad topics in Hong Kong:

截至2019年6月，香港合共有285項有關認知障礙症的本地研究，研究內容涵蓋8個不同主題：

Factors influencing cognition  
影響認知能力的因素 **37**

Interventions  
介入及治療 **68**

Service providers' attitude  
服務提供者的態度 **12**

Screening instruments  
篩查工具 **56**

Prevalence  
患病率 **8**

Caregiver status  
照顧者狀況 **49**

Awareness & attitude  
認識與態度 **7**

Functional performance  
患者的功能表現 **48**

# SOCIETAL COST OF DEMENTIA 社會成本

2010  
HK\$12,220 million  
百萬港元



85%  
Informal care  
家庭照顧

13%  
Institutional care  
院舍照顧

2036  
HK\$31,810 million  
百萬港元

Source 資料來源: Yu, R., et al, 2010.<sup>5</sup>

# CARE NEEDS & CARER BURDEN 照顧需要與照顧者負擔

More diverse needs in support for activities of daily living with increasing level of severity.<sup>7</sup> The typical carer has significant burden.<sup>8</sup>

隨著病情惡化，患者需要越來越多元化的支援去維持日常生活。一般家庭照顧者都感受到顯著的照顧負擔。

Source 資料來源: Chung JCC, 2006.<sup>7</sup>



# SERVICE NEEDS 服務需要

## Social & Informal Care 社會服務及家庭照顧

People with dementia require daily 5.8 hours of care & support in activities of daily living.<sup>6</sup>

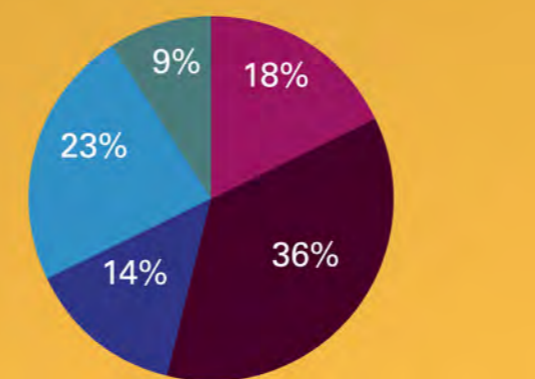
認知障礙症患者需要每天5.8小時的照顧和支援來進行日常生活活動。



## Healthcare 醫療服務

### Distribution of healthcare service needs of people with dementia:

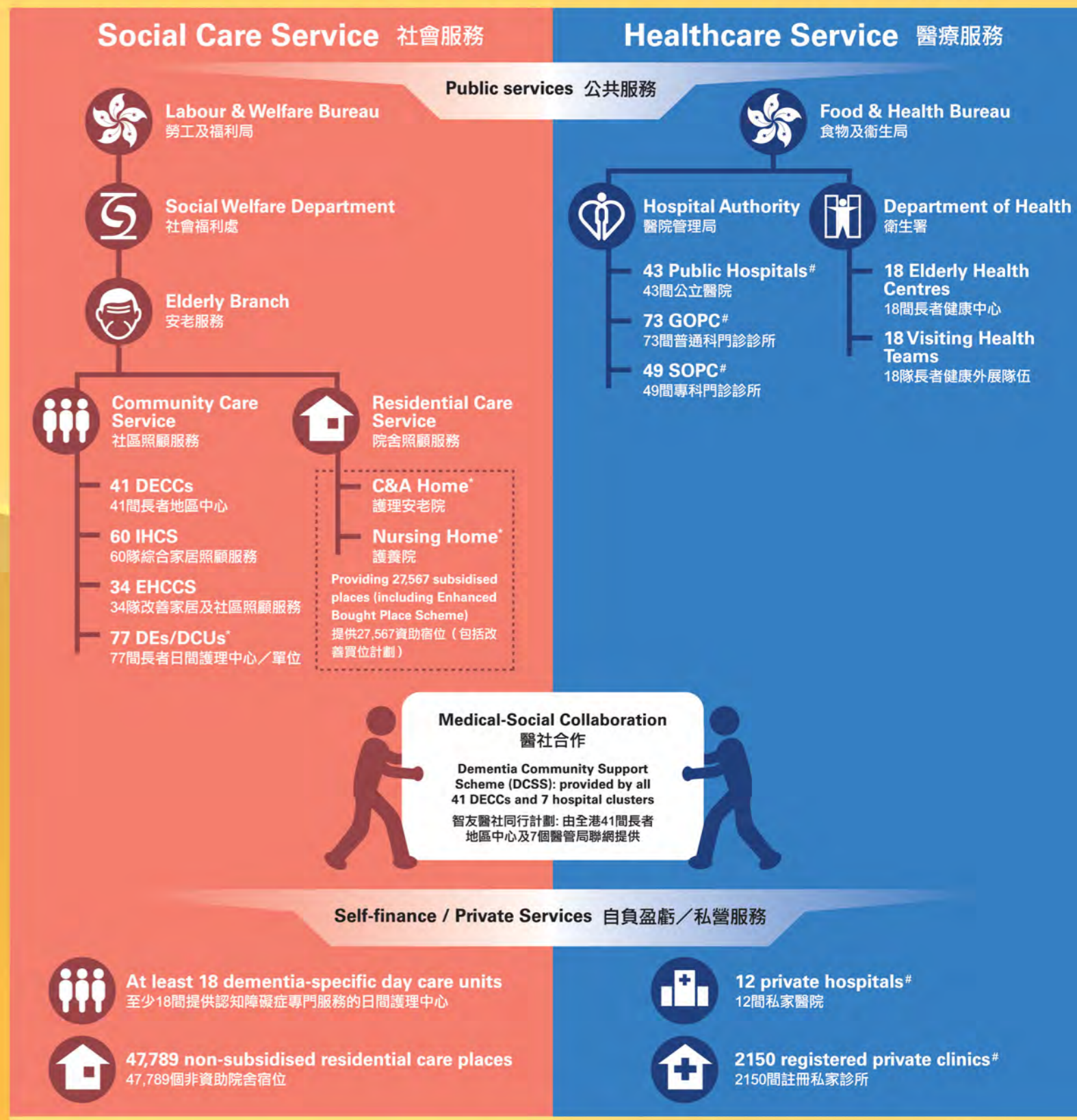
認知障礙症患者的醫療服務需要分佈如下：



- Periodic Assessment 定期評估
- Day Care + Regular Medical Support 日間照顧和定期醫療服務
- Specialist Care 專科服務
- Outreach / institution 外展/院舍服務
- Others 其他

Source: Food and Health Bureau of Hong Kong SAR.<sup>9</sup>  
資料來源: 香港特別行政區 食物及衛生局

# CARE SERVICE IN HONG KONG 香港的照顧服務



\*Additional financial subsidy for dementia care: Dementia Supplement 額外津貼: 照顧認知障礙症患者補助金

#Doctor to population ratio: 2.0/1,000 (2018 figure<sup>11</sup>) 醫生對人口比例: 2.0/1,000 (2018年數字)

14,290 registered medical practitioners (2017 figure<sup>10</sup>), including 160 geriatricians, 124 neurologists and 376 psychiatrists on the Specialist Register 14,290名註冊醫生 (2017年數字), 包括160名老人科、124名腦神經科和376名精神科專科註冊醫生

Source 資料來源: [https://www.swd.gov.hk/en/index/site\\_pubsvc/page\\_elderly/](https://www.swd.gov.hk/en/index/site_pubsvc/page_elderly/)  
<https://www.gov.hk/en/residents/health/hosp/overview.htm>

DECCs District Elderly Community Centres 長者地區中心  
IHCS Integrated Home Care Service 綜合家居照顧服務  
EHCCS Enhanced Home and Community Care Services 改善家居及社區照顧服務  
DEs/DCUs Day Care Centre/Unit for the Elderly 長者日間護理中心/單位  
C&A Home Care and Attention Home 護理安老院  
GOPC General Outpatient Clinics 普通科門診  
SOPC Special Outpatient Clinics 專科門診